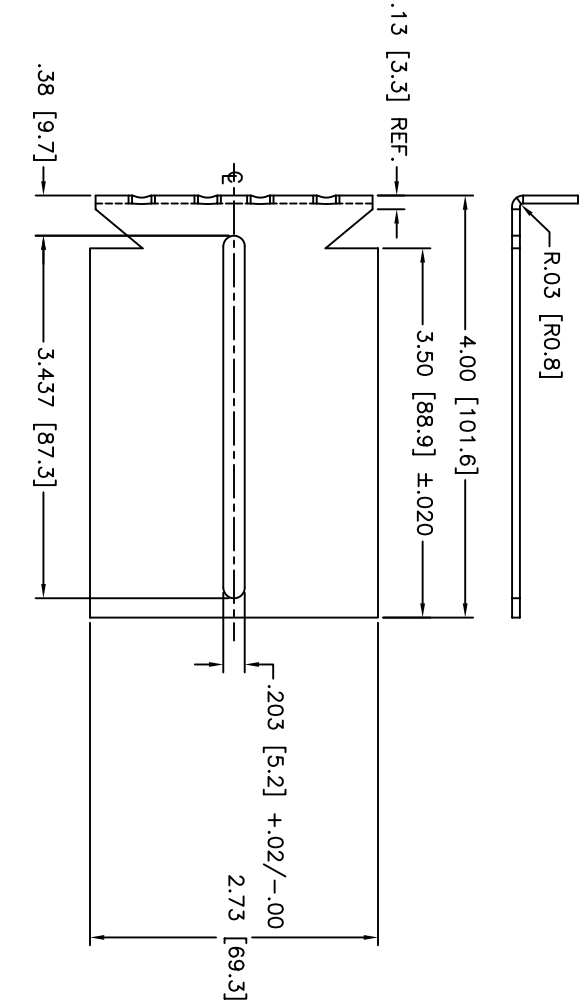
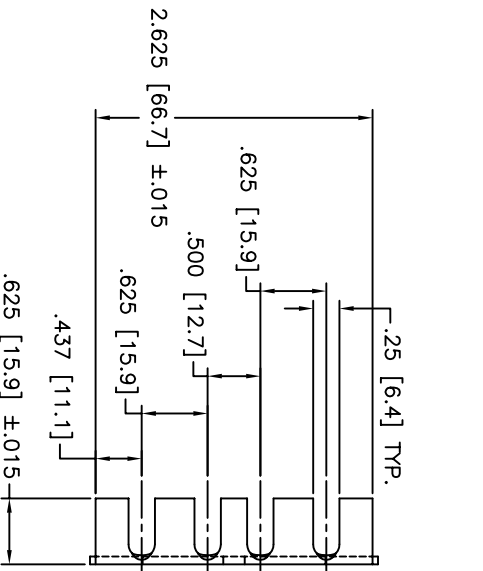
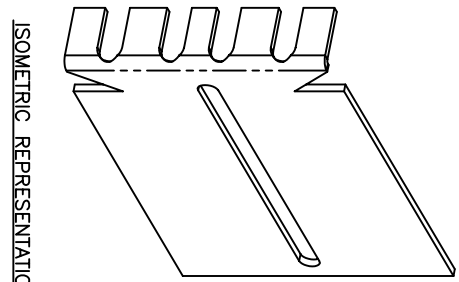


- NOTES:
1. MATERIAL: .075" THICK STOCK, COLD ROLLED STEEL
 2. FINISH: ZINC PLATE



BK-8 CONTENTS:

PART NUMBER	DESCRIPTION	QUANTITY
SPO-746	RETMA BRACKET SHOWN	4
	SCREW, FHPH, 10-32 X .44 ZINC	8
	NUT, UNF 2B, #10-32 SS	8
	WASHER, LOCK, #10 SS	8
	WASHER, FLAT, #10 SS THIN	8



Irvine Technology Center
 410 Exchange, Suite 200
 Irvine, CA 92602
 Tel: (714) 665-4400
 Website: www.jonathanengr.com
 Engineering • Production • Integration • Subassembly • Logistics
 United States • Mexico • China • Taiwan

DIMENSIONS SHOWN AS: IN. [MM]	TOLERANCE UNLESS OTHERWISE NOTED
.XXX [X]	±.010"
.XX [X]	±.030"
ANGLES	±1°

PART NO.	DESCRIPTION:
BK-8	432/433 RETMA BRACKET & HARDWARE KIT

DATE: 07/25/04

COPYRIGHT © 2004 JONATHAN ENGINEERED SOLUTIONS

1 2 3 4 5 6