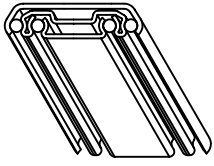
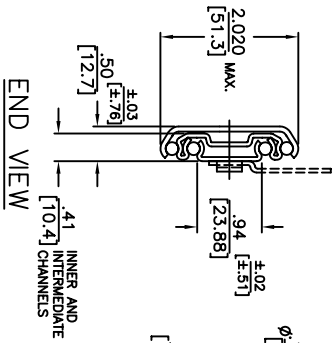


- NOTES:
1. SLIDE IS SYMMETRICAL. MAY BE USED AS LEFT OR RIGHT HAND SLIDE.
 2. HOLES OTHER THAN SHOWN MAY BE IN THE SLIDE MEMBERS AT JONATHAN OPTION.
 3. FOR 'EM/RETM' BRACKETS, SEE SEPARATE SECTION.
 4. NON METALLIC STOPS OPEN AND CLOSED.
 5. USE NUMBER 8 PAN OR BINDING HEAD SCREWS FOR MOUNTING THRU THE OUTER CHANNEL.
 6. SLIDE IS PROVIDED WITH LOCK OPEN FEATURE.

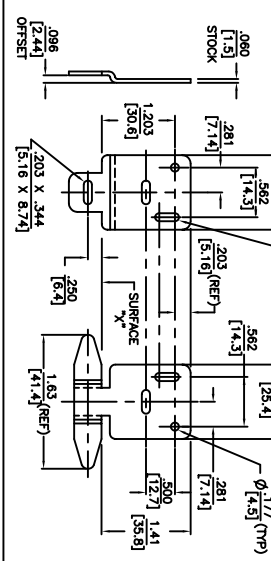
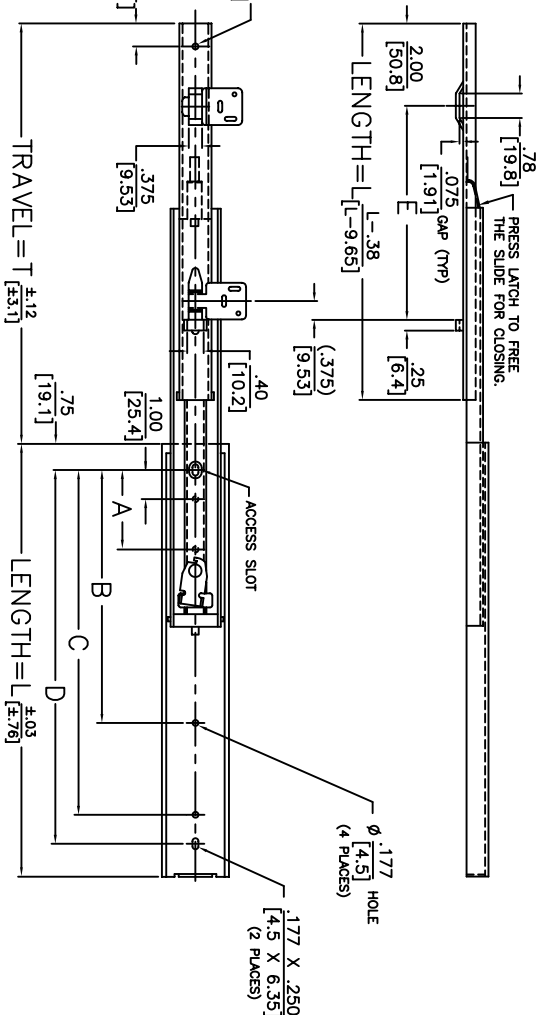
SP0-465 AND SP0-522 BAYONETS TO BE ORDERED SEPARATELY.



ISOMETRIC REPRESENTATION



END VIEW



SP0-465 FRONT BAYONET
 SURFACE *R* POCKET CONTACTS THE TOP OF THE BAYONET POCKET IN THE SLIDE SURFACE.

SP0-522 REAR BAYONET

| PART NO. | SLIDE DIM. | SLIDE TRAVEL DIM. | MOUNTING HOLE PATTERN | | | | | LOAD RATING PER PAIR |
|----------|------------|-------------------|-----------------------|--------|--------|--------|---------|----------------------|
| | | | A | B | C | D | E | |
| 37OLD-10 | 10 | 11 | 4.500 | 7.500 | 8.500 | 5.375 | 180 LBS | |
| | 254 | 279 | 114.30 | 190.50 | 215.90 | 136.50 | 82 KG | |
| 37OLD-12 | 12 | 13 | 5.500 | 9.500 | 10.500 | 7.375 | 175 LBS | |
| | 304.8 | 330 | 139.70 | 241.30 | 266.70 | 187.30 | 79 KG | |
| 37OLD-14 | 14 | 15 | 4.000 | 11.500 | 12.500 | 9.375 | 170 LBS | |
| | 355.6 | 381 | 101.60 | 215.90 | 292.10 | 238.10 | 77 KG | |
| 37OLD-16 | 16 | 17 | 5.000 | 13.500 | 14.500 | 11.375 | 160 LBS | |
| | 406.4 | 432 | 127.00 | 241.30 | 342.90 | 288.90 | 73 KG | |
| 37OLD-18 | 18 | 19 | 5.500 | 11.000 | 15.500 | 13.375 | 150 LBS | |
| | 457.2 | 483 | 139.70 | 279.40 | 393.70 | 419.10 | 68 KG | |
| 37OLD-20 | 20 | 21 | 6.000 | 12.500 | 17.500 | 15.375 | 145 LBS | |
| | 508 | 533 | 152.40 | 317.50 | 444.50 | 390.50 | 66 KG | |
| 37OLD-22 | 22 | 23 | 7.000 | 13.500 | 19.500 | 17.375 | 140 LBS | |
| | 558.8 | 584 | 177.80 | 342.90 | 495.30 | 520.70 | 64 KG | |
| 37OLD-24 | 24 | 25 | 7.500 | 15.000 | 21.500 | 19.375 | 135 LBS | |
| | 609.6 | 635 | 190.50 | 381.00 | 546.10 | 571.50 | 61 KG | |
| 37OLD-26 | 26 | 27 | 8.000 | 16.500 | 23.500 | 21.375 | 130 LBS | |
| | 660.4 | 686 | 203.20 | 419.10 | 596.90 | 622.30 | 59 KG | |
| 37OLD-28 | 28 | 29 | 9.000 | 17.500 | 25.500 | 23.375 | 125 LBS | |
| | 711.2 | 737 | 228.60 | 444.50 | 647.70 | 673.10 | 57 KG | |
| 37OLD-30 | 30 | 31 | 9.500 | 19.000 | 27.500 | 25.375 | 120 LBS | |
| | 762 | 787 | 241.30 | 482.60 | 698.50 | 723.90 | 55 KG | |

JONATHAN
 Engineered Solutions

Irvine Technology Center
 410 Exchange, Suite 200
 Irvine, CA 92602
 Tel: (714) 665-4400

Website: www.jonathanEng.com
 Engineering • Production • Integration / Subassembly • Logistics
 United States • Mexico • China • Taiwan

| | | |
|----------------------------------|--|-----------------------|
| DIMENSIONS SHOWN AS: IN. (MM) | PART NO. 37OLD | DESCRIPTION: STEEL |
| TOLERANCE UNLESS OTHERWISE NOTED | | |
| XX ±0.020 | | |
| X ±0.5 | | |
| XXX ±0.10 | DATE: 6/04 | |
| XX ±.25 | | |
| ANGLES ±1° | COPYRIGHT © 2004 JONATHAN ENGINEERED SOLUTIONS | |

LOAD RATING: 120-180 LBS./ 55-82 KG.