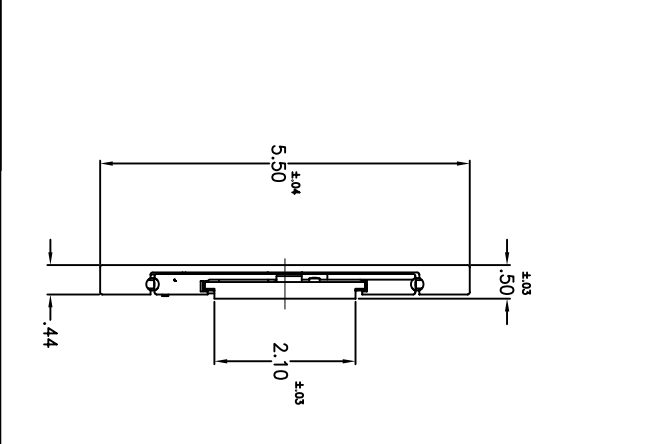


1. MATERIAL: CHANNELS ARE FABRICATED FROM HIGH STRENGTH ALUMINUM ALLOYS WITH TENSILE STRENGTH OF 35,000 PSI MIN. (PER ASTM B221) COMPONENT PARTS ARE 302 OR 303 CRES AND HIGH STRENGTH ALUMINUM ALLOYS. BALL BEARING ARE 440 CRES.
2. FINISH: CHANNELS ARE ANODIZED PER MIL-A-8625 TYPE II, CLASS 1. CRES PARTS PASSIVATED PER SAE-AMS-QQ-P-35.
3. LEFT HAND SHOWN, RIGHT HAND OPPOSITE
4. SLIDE LOCKS IN OPEN POSITION AND IS PROVIDED WITH QUICK DISCONNECT OF CHASSIS SECTION.

5. THESE SURFACES ALIGN WHEN SLIDE IS IN THE CLOSED POSITION.
 6. CABINET SECTION AND CHASSIS SECTION MAY BE PURCHASED SEPARATELY AND ARE INTERCHANGEABLE.
- AMOUNT AND LOCATION OF ROLLERS TO BE DETERMINED BY JONATHAN ENGINEERING SOLUTIONS

PART NO.	MOUNTING HOLE PATTERN						
	SERIES	LENGTH	DIM. L	DIM. T	CABINET SECTION A B C D	CHASSIS SECTION E F G	
6000D-10	10	9	-	-	5.000 8.000	- 6.000 8.000	
6000D-11	11	10	-	-	5.000 9.000	- 7.000 9.000	
6000D-12	12	11	-	-	6.000 10.000	- 7.000 10.000	
6000D-13	13	12	-	-	6.000 11.000	- 8.000 11.000	
6000D-14	14	13	-	-	7.000 12.000	- 8.000 12.000	
6000D-15	15	14	-	-	7.000 13.000	- 9.000 13.000	
6000D-16	16	15	-	-	8.000 14.000	- 9.000 14.000	
6000D-17	17	16	-	-	9.000 15.000	- 10.000 15.000	
6000D-18	18	17	-	-	10.000 16.000	- 10.000 16.000	
6000D-19	19	18	-	-	10.000 17.000	- 11.000 17.000	
6000D-20	20	19	-	-	10.000 18.000	- 12.000 18.000	
6000D-21	21	20	-	-	10.000 19.000	- 13.000 19.000	
6000D-22	22	21	-	-	12.000 20.000	- 14.000 20.000	
6000D-23	23	22	-	-	12.000 21.000	- 14.000 21.000	
6000D-24	24	23	-	-	12.000 22.000	- 15.000 22.000	
6000D-25	25	24	-	-	14.000 23.000	- 15.000 23.000	
6000D-26	26	25	-	-	14.000 24.000	- 16.000 24.000	
6000D-27	27	26	-	-	14.000 25.000	- 17.000 25.000	
6000D-28	28	27	-	-	14.000 26.000	- 18.000 26.000	



JONATHAN

Irvin Technology Center
 410 Exchange, Suite 200
 Irvin, CA 92602
 Tel: (714) 665-4400

PART NO. 6000D
 DATE: 02.13.08

DESCRIPTION: ALUMINUM SERIES 6000D