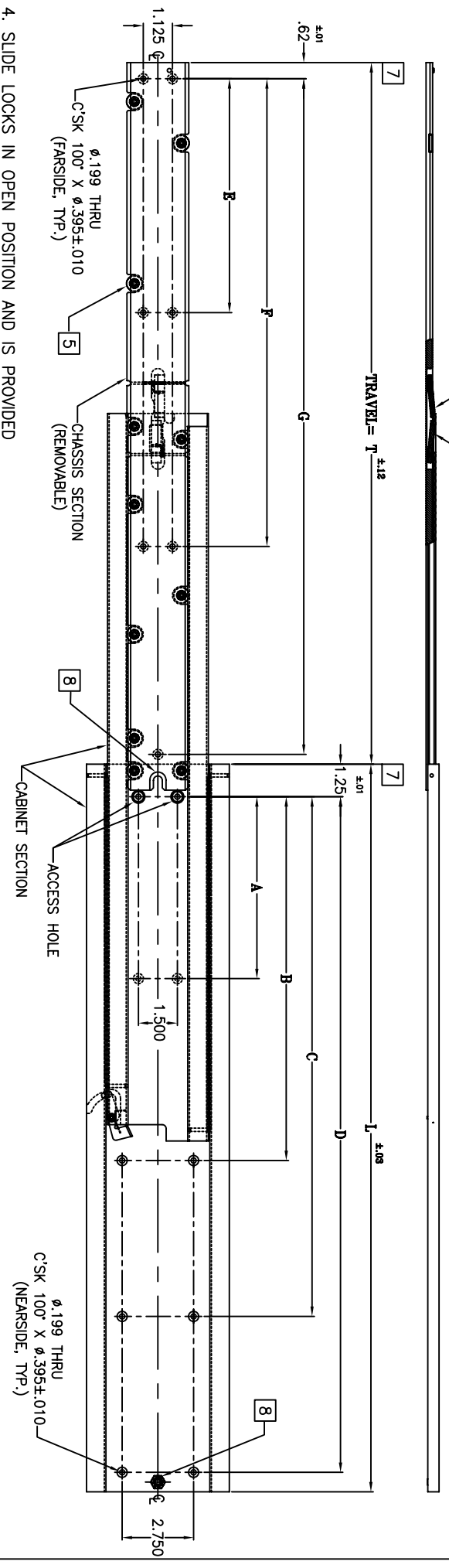


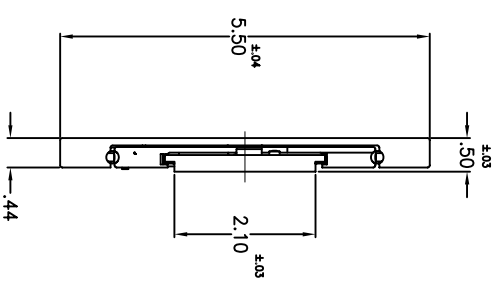
LOCK MECHANISM  
QUICK DISCONNECT MECHANISM




1. MATERIAL: CHANNELS ARE FABRICATED FROM HIGH STRENGTH ALUMINUM ALLOYS WITH TENSILE STRENGTH OF 35,000 PSI MIN. (PER ASTM B221) COMPONENT PARTS ARE 302 OR 303 CRES AND HIGH STRENGTH ALUMINUM ALLOYS. BALL BEARING ARE 440 CRES.
2. FINISH: CHANNELS ARE ANODIZED PER MIL-A-8625 TYPE II, CLASS 1. CRES PARTS PASSIVATED PER SAE-AMS-QQ-P-35.
3. LEFT HAND SHOWN, RIGHT HAND OPPOSITE
4. SLIDE LOCKS IN OPEN POSITION AND IS PROVIDED WITH QUICK DISCONNECT OF CHASSIS SECTION.
5. LEFT HAND SHOWN, RIGHT HAND OPPOSITE
6. MATERIAL: CHANNELS ARE FABRICATED FROM HIGH STRENGTH ALUMINUM ALLOYS WITH TENSILE STRENGTH OF 35,000 PSI MIN. (PER ASTM B221) COMPONENT PARTS ARE 302 OR 303 CRES AND HIGH STRENGTH ALUMINUM ALLOYS. BALL BEARING ARE 440 CRES.

PART NO.	MOUNTING HOLE PATTERN						
	SERIES	LENGTH	DIM. L	DIM. T	CABINET SECTION A B C D	CHASSIS SECTION E F G	
600QDA-10	10	9	-	-	5.000 8.000	- 6.000 8.000	
600QDA-11	11	10	-	-	5.000 9.000	- 7.000 9.000	
600QDA-12	12	11	-	-	6.000 10.000	- 7.000 10.000	
600QDA-13	13	12	-	-	6.000 11.000	- 8.000 11.000	
600QDA-14	14	13	-	-	7.000 12.000	4.000 8.000 12.000	
600QDA-15	15	14	-	-	7.000 13.000	4.000 9.000 13.000	
600QDA-16	16	15	4.000	8.000	11.000 14.000	4.000 9.000 14.000	
600QDA-17	17	16	5.000	9.000	12.000 15.000	5.000 10.000 15.000	
600QDA-18	18	17	5.000	10.000	13.000 16.000	5.000 10.000 16.000	
600QDA-19	19	18	5.000	10.000	13.000 17.000	5.000 12.000 17.000	
600QDA-20	20	19	5.000	10.000	14.000 18.000	4.000 12.000 18.000	
600QDA-21	21	20	6.000	12.000	15.000 19.000	6.000 13.000 19.000	
600QDA-22	22	21	6.000	12.000	16.000 20.000	7.000 14.000 20.000	
600QDA-23	23	22	6.000	12.000	16.000 21.000	7.000 14.000 21.000	
600QDA-24	24	23	6.000	12.000	17.000 22.000	8.000 15.000 22.000	
600QDA-25	25	24	7.000	14.000	18.000 23.000	8.000 15.000 23.000	
600QDA-26	26	25	7.000	14.000	19.000 24.000	8.000 16.000 24.000	
600QDA-27	27	26	7.000	14.000	19.000 25.000	8.000 17.000 25.000	
600QDA-28	28	27	7.000	14.000	20.000 26.000	9.000 18.000 26.000	

- 7 THESE SURFACES ALIGN WHEN SLIDE IS IN THE CLOSED POSITION.
- 8 SLIDE IS PROVIDED WITH ADJUSTABLE REAR SHOCKBLOCK.
- 5 AMOUNT AND LOCATION OF ROLLERS TO BE DETERMINED BY JONATHAN ENGINEERING SOLUTIONS
6. CABINET SECTION AND CHASSIS SECTION MAY BE PURCHASED SEPARATELY AND ARE INTERCHANGEABLE.




  
**Jonathan**
  
 Irvine Technology Center
   
 410 Exchange, Suite 200
   
 Irvine, CA 92602
   
 Tel: (714) 665-4400

PART NO.	DESCRIPTION:
600QDA	ALUMINUM
DATE:	SERIES 600QDA
02.13.08	