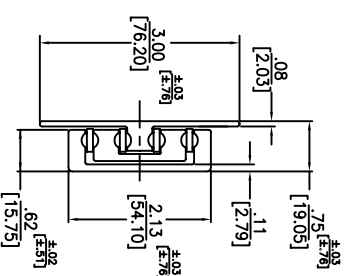
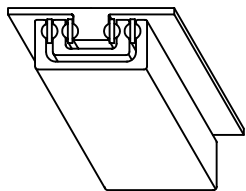
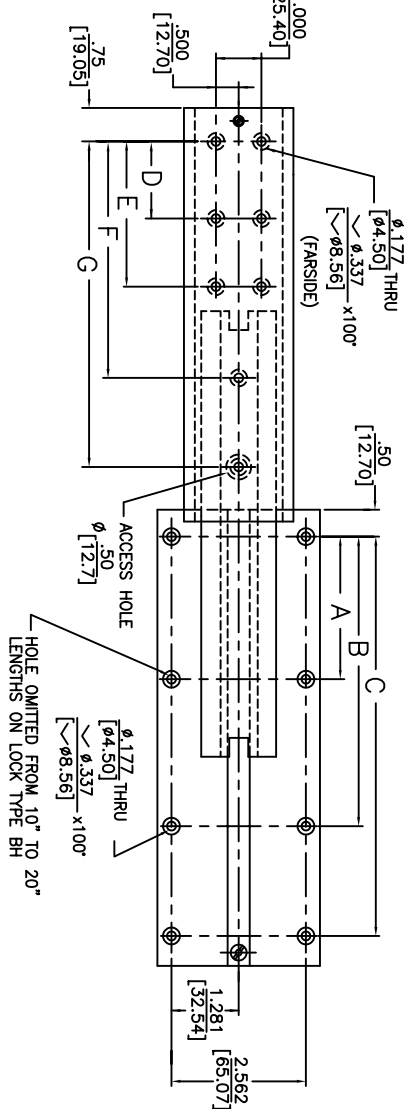
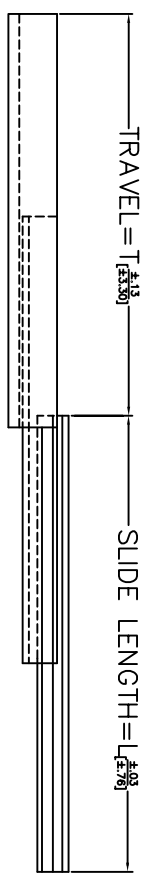


- NOTES:
1. SLIDE IS SYMMETRICAL. MAY BE USED AS LEFT OR RIGHT HAND SLIDE.
 2. FOR LOCKING DEVICES, SEE SEPARATE SECTION.
 3. MOUNTING HOLE TOLERANCE: $\pm .005$ [±.13]



END VIEW



PART NO	SLIDE DIM. LENGTH	SLIDE DIM. HOLE	MOUNTING HOLE PATTERN							LOAD RATING
			A	B	C	D	E	F	G	
93-10	10	9	76.2	152.4	228.6	76.2				129 LBS
93-12	29.4	28.6	101.6	177.8	278.4	101.6				38 LBS
93-14	14	13	101.6	228.6	330.2	127				132 LBS
93-16	18	15	101.6	228.6	330.2	127				124 LBS
93-18	18	15	101.6	228.6	330.2	127				108 LBS
93-20	20	19	152.4	279.4	431.8	76.2				48 KG
93-22	50.8	49.2	152.4	330.2	482.6	101.6				97 LBS
93-24	50.8	49.2	152.4	330.2	482.6	101.6				84 LBS
93-26	28	25	101.6	228.6	330.2	127				81 LBS
93-28	28	25	101.6	228.6	330.2	127				78 LBS
93-30	30	27	101.6	228.6	330.2	127				76 LBS
93-32	32	29	101.6	228.6	330.2	127				74 LBS
93-34	34	31	101.6	228.6	330.2	127				72 LBS
93-36	36	33	101.6	228.6	330.2	127				69 LBS



Irvine Technology Center
410 Exchange, Suite 200
Irvine, CA 92602
Tel: (714) 665-4400
Website: www.jonathanengr.com
Engineering • Production • Integration / Subassembly • Logistics
United States • Mexico • China • Taiwan

DIMENSIONS SHOWN IN: [MM]		PART NO. 93		DESCRIPTION: ALUMINUM	
TOLERANCE UNLESS OTHERWISE NOTED		DATE: 6/04		SERIES 93	
XX	±.010			LOAD RATING: 69-138 LBS. / 31-62 KG.	
XXX	±.005				
XX	±.13				
ANGLES ±1°					