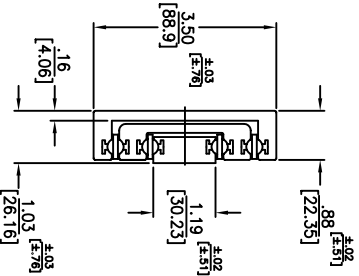
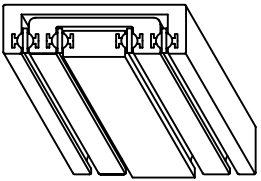
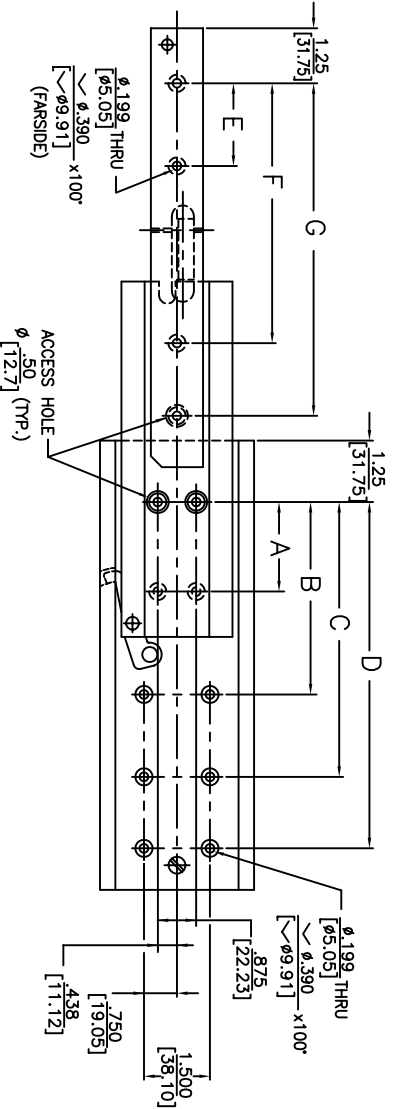
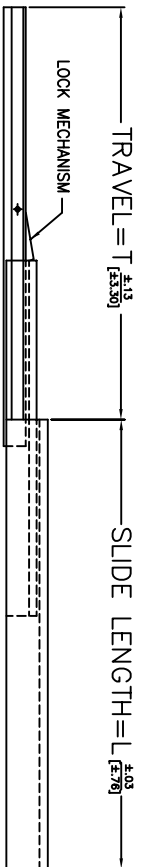


- NOTES:**
1. WHEN ORDERING WITH LOCK, SPECIFY L.H. OR R.H. (EX. DR350L-12L, DR350L-12R) (LEFT SLIDE AS SHOWN, RIGHT SLIDE OPPOSITE)
 2. SLIDE IS PROVIDED WITH LOCK TYPE "E". LOCKS IN OPEN POSITION ONLY. (OPTIONAL)
 3. MOUNTING HOLE TOLERANCE: $\pm .13$



END VIEW



PART NO.	SERIES	SLIDE DIM.	SLIDE TRAVEL DIM.	MOUNTING HOLE PATTERN					LOAD RATING PER PAIR	
				OUTER MEMBER	INNER MEMBER	INNER MEMBER	INNER MEMBER	INNER MEMBER		
LENGTH	L	T	A	B	C	D	E	F	G	
DR350-12	12	11		6	10	10	5	9	500 LBS	
DR350L-12	304.6	279.4		152.4	254	254	127	228.6	226 KG	
DR350-14	14	13		7	12	12	7	11	500 LBS	
DR350L-14	355.6	330.2		177.8	304.8	304.8	177.8	279.4	226 KG	
DR350-16	16	15		8	11	14	8	13	500 LBS	
DR350L-16	406.4	381		101.6	203.2	279.4	101.6	203.2	226 KG	
DR350-18	18	17		5	10	13	5	15	500 LBS	
DR350L-18	457.2	431.8		127	254	330.2	127	254	226 KG	
DR350-20	20	19		5	10	14	5	11	460 LBS	
DR350L-20	508	482.6		127	254	355.6	127	279.4	208 KG	
DR350-22	22	21		6	12	16	6	12	420 LBS	
DR350L-22	558.8	533.4		152.4	304.8	406.4	152.4	304.8	190 KG	
DR350-24	24	23		6	12	17	6	14	395 LBS	
DR350L-24	609.6	584.2		152.4	304.8	431.8	152.4	304.8	179 KG	
DR350-26	26	25		7	14	19	7	15	380 LBS	
DR350L-26	660.4	635		177.8	355.6	482.6	177.8	381	172 KG	
DR350-28	28	27		7	14	20	8	16	365 LBS	
DR350L-28	711.2	685.8		177.8	355.6	508	177.8	406.4	165 KG	
DR350-30	30	29		8	16	22	9	18	350 LBS	
DR350L-30	762	736.6		203.2	406.4	558.8	203.2	406.4	158 KG	
DR350-32	32	31		8	16	23	9	19	325 LBS	
DR350L-32	812.8	787.4		203.2	406.4	584.2	203.2	406.4	147 KG	
DR350-34	34	33		9	18	25	10	20	305 LBS	
DR350L-34	863.6	838.2		228.6	457.2	635	228.6	457.2	138 KG	
DR350-36	36	35		9	18	26	11	22	280 LBS	
DR350L-36	914.4	889		228.6	457.2	660.4	228.6	457.2	127 KG	



Irvine Technology Center
 410 Exchange, Suite 200
 Irvine, CA 92602
 Tel: (714) 665-4400
 Website: www.jonathanengr.com
 Engineering • Production • Integration • Subassembly Logistics
 United States • Mexico • China • Taiwan

DIMENSIONS SHOWN IN: [MM]	PART NO. DR350	DESCRIPTION: ALUMINUM
AS: TOLERANCE UNLESS OTHERWISE NOTED	DATE: 6/04	SERIES DR350 (DYNARACE)
XX ±.010		LOAD RATING: 280-500 LBS./ 127-226 KG.
X ±.013		
XXX ±.005		
XX ±.13		
ANGLES ±1°		