

1

2

3

4

5

A

A

B

B

C

C

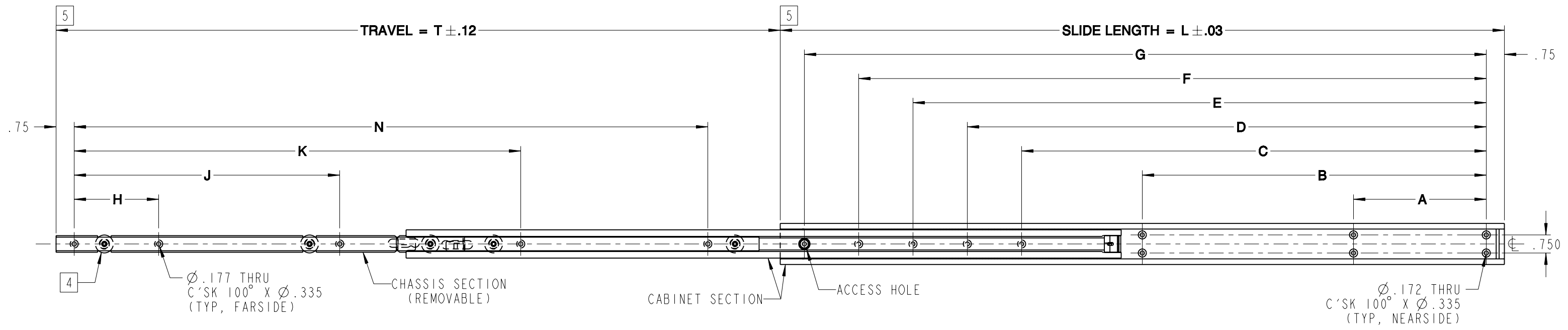
D

D

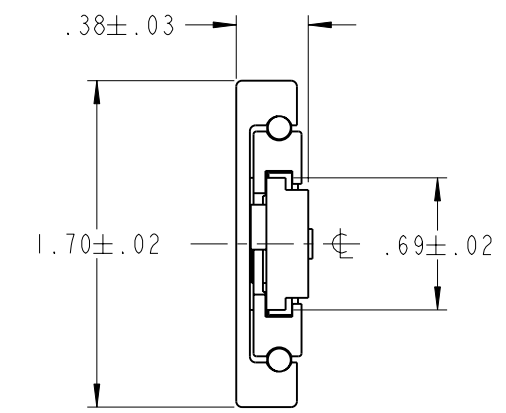
E

E

LOCK MECHANISM QUICK DISCONNECT MECHANISM

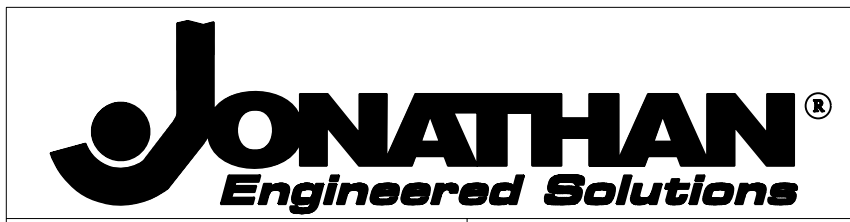


- 7. CABINET SECTION OR CHASSIS SECTION MAY BE PURCHASED SEPARATELY AND ARE INTERCHANGEABLE.
- 6. SLIDE IS SYMMETRICAL, MAY BE USED AS LEFT-HAND OR RIGHT-HAND MOUNTING UNIT.
- 5 FOR REFERENCE PURPOSE ONLY, THESE SURFACES TO ALIGN WHEN SLIDE IS IN CLOSED POSITION.
- 4 AMOUNT AND LOCATION OF BALL BEARING ROLLERS DETERMINED BY JONATHAN ENGINEERED SOLUTIONS.
- 3. SLIDE LOCKS IN FULL OPEN POSITION AND IS PROVIDED WITH QUICK DISCONNECT OF CHASSIS SECTION.
- 2. FINISH: SLIDE CHANNELS AND ALUMINUM COMPONENTS ARE ANODIZED PER MIL-A-8625, TYPE II, CLASS I. CRES COMPONENTS ARE PASSIVATED PER SAE-AMS-QQ-P-35.
- 1. MATERIAL: SLIDE CHANNELS ARE FABRICATED FROM ALUMINUM ALLOY 7075-T6. COMPONENT PARTS ARE 302/303 CRES AND HIGH STRENGTH ALUMINUM. BALL BEARINGS ARE 440 CRES.



END VIEW

PART NO.	SLIDE LENGTH	SLIDE TRAVEL	CABINET SECTION										LOAD RATING PER PAIR	
			A	B	C	D	E	F	G	H	J	K		N
170QD-10	10	10	4.000	-	6.000	-	-	-	8.250	2.500	-	-	6.750	135 lbs
170QD-12	12	12	4.000	-	8.000	-	-	-	10.250	3.500	-	-	8.250	130 lbs
170QD-14	14	14	5.500	-	10.000	-	-	-	12.250	3.500	-	9.000	10.250	125 lbs
170QD-16	16	16	5.500	-	9.750	12.000	-	-	14.250	3.500	-	10.000	12.250	120 lbs
170QD-18	18	18	5.500	-	9.500	11.750	14.000	-	16.250	3.500	6.000	12.500	14.250	115 lbs
170QD-20	20	20	5.500	-	11.500	13.750	16.000	-	18.250	3.500	7.000	13.500	16.250	110 lbs
170QD-22	22	22	5.500	-	13.500	15.750	18.000	-	20.250	3.500	8.000	14.500	18.250	105 lbs
170QD-24	24	24	5.500	-	13.250	15.500	17.750	20.000	22.250	3.500	9.000	15.500	20.250	100 lbs
170QD-26	26	26	5.500	11.250	15.250	17.500	19.750	22.000	24.250	3.500	10.00	16.500	22.250	95 lbs
170QD-28	28	28	5.500	13.250	17.250	19.500	21.750	24.000	26.250	3.500	10.000	17.500	24.250	90 lbs
170QD-30	30	30	5.500	14.250	19.250	21.500	23.750	26.000	28.250	3.500	11.000	18.500	26.250	80 lbs



Irvine Technology Center  
 410 Exchange, Suite 200  
 Irvine, CA 92602  
 Tel. (714) 665-4400  
 Fax: (714) 368-7002  
 Website: www.jonathanengr.com  
 Engineer - Production - Integration/ Subassembly - Logistics  
 United States - Mexico - China - Taiwan

TOLERANCES UNLESS OTHERWISE NOTED				PART NUMBER : <b>170QD</b>		DESCRIPTION : <b>ALUMINUM 170QD</b> <b>LOAD RATING : 80-135 lbs</b>
.XX	.XXX	ANGLES	HOLES	DATE : 06/01/09		
± .01	± .005	± 1°	± .005			
SHEET 1 OF 1				COPYRIGHT © 2009 JONATHAN ENGINEERED SOLUTIONS		

1

2

3

4

5